

# Farbpalette 2024 / 2025

## Übersicht der Front- und Korpusfarben



Weiß  
(WS) / PK1



Vanille  
(VL) / PK1



Pastellgelb  
(PG) / PK1



Zitronengelb  
(ZG) / PK1



Sonnengelb  
(SG) / PK1



Mandarine  
(MD) / PK1



Rostorange  
(RO) / PK1



Rot  
(RT) / PK1



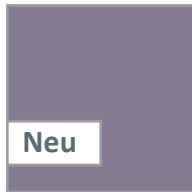
Bordeaux  
(BX) / PK1



Magenta  
(MA) / PK1



Orchidee  
(OC) / PK2



Flieder  
(FL) / PK1



Violett  
(VI) / PK2



Nachtblau  
(NA) / PK2



Stahlblau  
(SB) / PK1



Ozean  
(OZ) / PK2



Aqua  
(AQ) / PK1



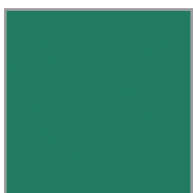
Hellblau  
(HB) / PK1



Polarblau  
(PB) / PK1



Limonengrün  
(LI) / PK1



Mintgrün  
(MI) / PK1



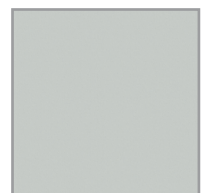
Moosgrün  
(MO) / PK2



Olivgrün  
(OL) / PK2



Salbei  
(SL) / PK2

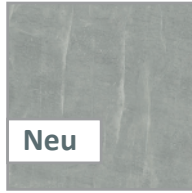


Lichtgrau  
(LG) / PK1

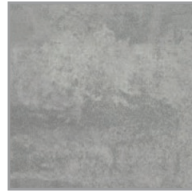
## Farbpalette 2024 / 2025



Silber  
(SI) / PK1



Marmor  
(MR) / PK1



Beton  
(BT) / PK1



Beton Antique  
(BQ) / PK1



Grau  
(GR) / PK1



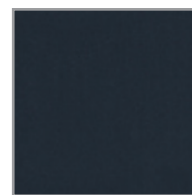
Stahl gebürstet  
(SGB) / PK2



Naturstein Grau  
(NG) / PK2



Schiefer Anthrazit  
(SF) / PK1



Anthrazit  
(AZ) / PK1



Braun  
(BR) / PK1



Cashmere  
(CS) / PK1



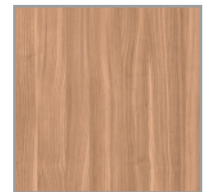
Esche  
(ES) / PK1



Akazie  
(AK) / PK1



Ahorn  
(AH) / PK1



Nussbaum  
(NB) / PK1



Buche  
(BU) / PK1



Walnuss  
(WN) / PK2



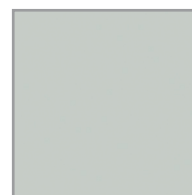
Platinweiß B1\*  
(PLW-B1) / PK2



Hellgrau B1\*  
(HG-B1) / PK2



Graphitschwarz B1\*  
(GS-B1) / PK2



HPL Grau\*\*  
(HPLG) / PK2

**Preiskategorien:** PK1 = Kostenneutral PK2 = Gegen Aufpreis

\* Brandschutzklasse 1 \*\* Duropol High Pressure Laminate für Oberböden und Schreibplatten